



EMEA

Berlin 1 Data Center

Complete solutions for housing your IT

Berlin is the **second-largest German data center market** behind Frankfurt. The BCIX, Berlin Commercial Internet Exchange, resides in the city and currently has 79 members, which makes it one of the **largest German internet exchange points** by membership.

Data center space

- 11.700+m² of IT space
- Flexible colocation deployments
- Ancillary spaces (offices, storages, and pre-installation rooms) available

Power

- Total power: 26MVA
- IT load: 5 – 12MW per data center building
- Average power density of 1.25 – 2.5kW/m²
- Two power supplies at 10kV level
- Separate, dual UPS systems (A- and B-supply) with 2N redundancy
- Redundantly designed emergency power
- System with diesel generators N+1

Cooling

- High efficient air-cooled chiller systems integrated free-cooling and ownprogrammed, weather-dependent cooling energy management systems
- CRAH units in the suites and technical rooms

- Concurrently maintainable air handling units (AHUs)
- Cold aisle containment
- Heat recovery with heating pumps

Fire protection

- Automatic digital fire alarm system on all levels with point and air aspiration detectors
- Very Early Smoke Detection Alarm Systems (VESDA)
- Firefighting system based on a argon or nitrogen extinguishing gas system
- Fire protection walls to a minimum of 90 minutes separation

Security

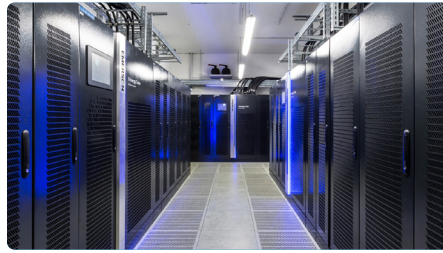
- 24/7 Security Operations Center and Operation Control Center
- Palisade fencing
- Video surveillance systems for the external perimeter, plant areas, and data halls
- Ram-raid bollard protection in accordance to BS PAS 68:2013
- Card swipe entry/exit to all doors
- Preventive risk assessment

Connectivity

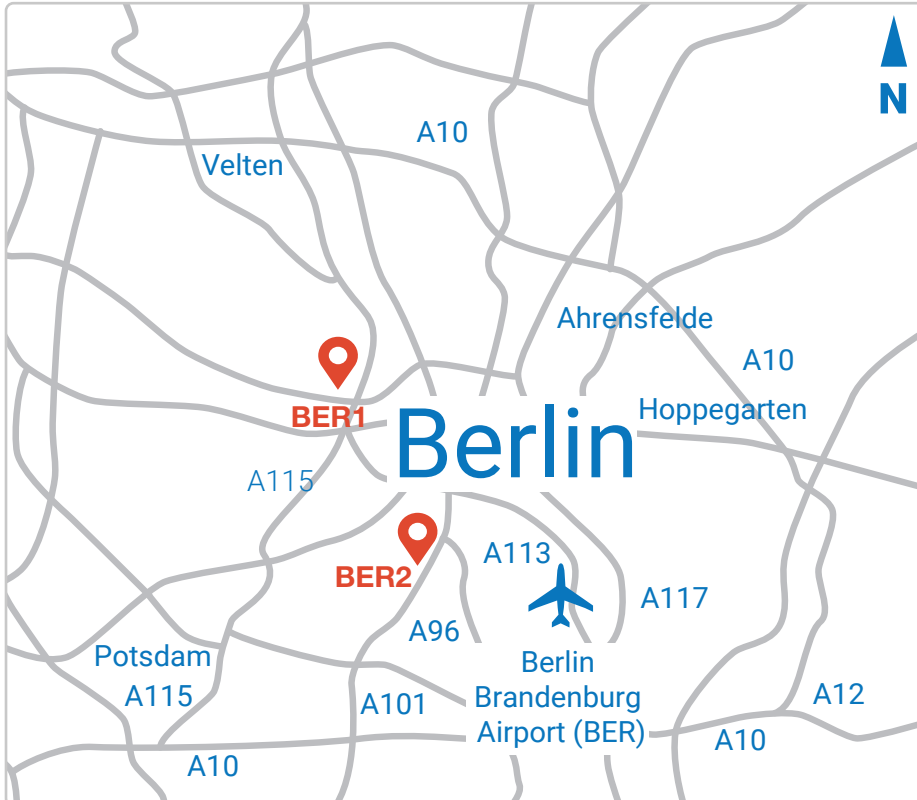
- Carrier- and cloud-neutral
- Carrier-Access-Rooms
- Carrier-Meet-Me-Rooms
- Carrier-mix
- Connectivity and dark fiber infrastructure
- Redundant cabling infrastructure
- Pre-Cabling
- High-performance internet access
- Inter data center connectivity between our data centers
- Multi Service Interconnection Platform

Additional services

- Client implementation
- Installation services
- 24/7 Remote Hands services
- Facility services
- Additional security services



Locations



Certifications

- Tier 3 - TIA 942/G
- ISO 9001
- ISO 27001 IT-GS (BSI)
- ISO 50001
- PCI DSS
- ISAE 3402 Type II

Global data center network

- Part of the NTT family
- Connectivity options to our global network

Service level agreement

- 99.995% power uptime availability
- Climate control conditions in line with ASHRAE guidelines
- Connectivity availability

Address and contact

Berlin 1 Data Center

NTT Global Data Centers EMEA GmbH
Nonnendammallee 15
13599 Berlin
Germany

T: +49 69 78 01-21 90

E: dc.emea.sales@global.ntt

