



EMEA

# Munich 2 Data Center

Built for a connected, sustainable and digital world

Munich is a leading European ICT location, with **the highest purchasing power** of any German city. Many large German companies are headquartered here, including **global corporations** such as Allianz, BMW, MAN, Munich Re and Siemens.

## Data center space

- 6,300+m<sup>2</sup> of IT space in building A and B
- Flexible colocation deployments
- Ancillary spaces available

## Power

- Total power: 30MVA
- IT load: 14MW
- Average power density of 1.5 – 2.0kW/m<sup>2</sup>
- Power supply at 20kV level
- Two separate UPS systems (A- and B-supply) with 2N redundancy
- Redundantly designed emergency power system with diesel generators N+1 per building

## Cooling

- High efficient chiller systems with freecooling integrated or separated coolers and own-programmed, weather-dependent energy management systems
- CRAH units in the suites and technical rooms
- Additional ground water cooling
- Concurrently maintainable air handling units (AHUs)

- Cold aisle containment
- Heat recovery with heating pumps

## Fire protection

- Very Early Smoke Detection Alarm (VESDA)
- Firefighting system based on a nitrogen extinguishing gas system
- Fire protection walls to a minimum of 90 minutes separation
- Automatic digital fire alarm system on all levels with point and air aspiration detectors

## Security

- Service Control Center for security and operation with 24/7 fallback to Frankfurt 1
- Palisade fencing
- Video surveillance systems for the external perimeter, plant areas, and data halls
- Ram-raid bollard protection in accordance to BS PAS 68:2013
- Card swipe entry/exit to all doors
- Preventive risk assessment

## Connectivity

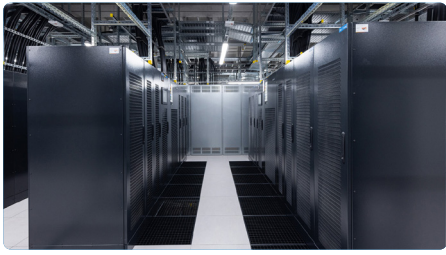
- Carrier- and cloud-neutral
- Carrier-Access-Rooms
- Carrier-Meet-Me-Rooms
- Carrier-mix
- Connectivity and dark fiber infrastructure
- Redundant cabling infrastructure
- Pre-Cabling
- High-performance internet access
- Inter data center connectivity between our data centers
- Multi Service Interconnection Platform

## Additional services

- Client implementation
- Installation services
- Remote Hands services
- Facility services
- Additional security services

## Certifications

- ISO 9001
- ISO 27001 IT-GS (BSI)
- ISO 50001
- PCI DSS
- EN 50600 (building A and B)



- ISAE 3402 Type II
- Tier 3-TIA 942/G (building A and B)

### Global data center network

- Part of the NTT family
- Connectivity options to our global network

### Service level agreement

- 99.999% power uptime availability
- Designed according to Tier 3 specifications
- Precise definition of critical services and availabilities
- Climate control conditions in line with ASHRAE guidelines and EN standards

### Address and contact

#### Munich 2 Data Center

NTT Global Data Centers EMEA GmbH  
Landshuter Straße 7  
85716 Unterschleißheim  
Germany

**T: +49 69 78 01-21 90**

**E: [dc.emea.sales@global.ntt](mailto:dc.emea.sales@global.ntt)**

### Locations



All rights reserved. 09/2022

The information in this data sheet contains only general descriptions which may not apply for each individual case or may change as products and services levels are adapted to new technological development. The required service elements are only binding when explicitly stated in a service contract. Technical specifications may be subject to alterations.